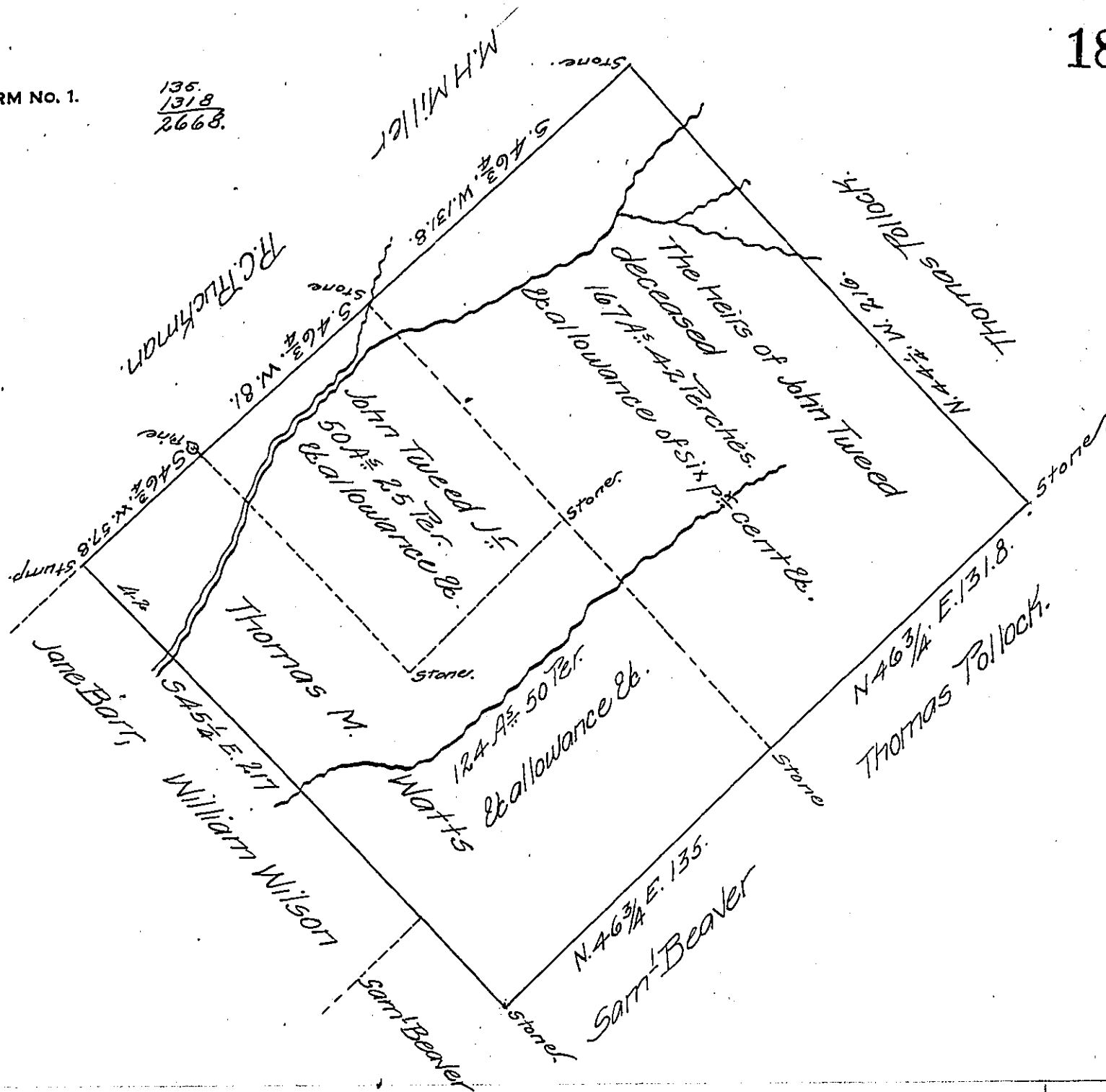


FORM NO. 1.

135
1318
2668.



Re Surveyed, and divided into three parts as represented by dotted lines in the above draft, October the 23rd AD. 1851. Containing 341 A. 117 Perches and Allowance E. Situate in Lewis Township North-umberland County, It being the same tract of land, which was Surveyed ~~in 1769~~ ^{by virtue} of an application granted to Albert Maxwell, bearing date the 3rd of April AD. 1769 N^o. 922.

Sam^l Young C.S.

To J Porter Brawley }
 Surveyor General }

IN TESTIMONY that the above is a copy of the original remaining on file in the Department of Internal Affairs of Pennsylvania, made conformably to an Act of Assembly approved the 16th day of February 1833, I have hereunto set my hand and caused the Seal of said Department to be affixed at Harrisburg, this twentyfirst day of February 1907

Loac R. Brown
 Secretary of Internal Affairs.